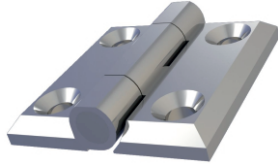


MY4040.1.2.4

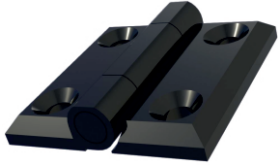
YAPRAK MENTEŞE (40*40mm-Krom Kapl.-Delikli)
LEAF HINGE (40*40mm-Chrome Plated-Hole)



200 Kg.

MY4040.1.5.4

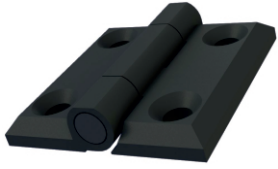
YAPRAK MENTEŞE (40*40mm-Boyalı-Delikli)
LEAF HINGE (40*40mm-Black Coated-Hole)



200 Kg.

MY4040.35.0.4

YAPRAK MENTEŞE (40*40mm-Plastik-Delikli)
LEAF HINGE (40*40mm-Polyamide-Hole)



100 Kg.

Kullanım Alanları

- * Elektrik Panoları
- * Makine Kapakları

Malzeme

- * 1: Gövde: Zamak
DIN-EN 1774-ZnAl4Cu1
- 35: Gövde: Polyamide DIN-EN ISO
1043-1 PA6 GFR30
- * Pim :Çelik St 37
- * 2: Kaplama: Krom
- 5: Kaplama: Boyalı
- 0: Kaplama: Kaplamasız
- * Menteşe Dönme Açısı: 180°

Applications

- * Electric Panels
- * Machinery Covers

Material

- * 1: Body : Zamak
DIN-EN 1774-ZnAl4Cu1
- 35: Gövde : Polyamide DIN-EN ISO
1043-1 PA6 GFR30
- * Pin : Steel St 37
- * 2: Finish: Chrome
- 5: Finish: Black Coated
- 0: Uncoated
- * Hinge Rotation Angle: 180°

